



DORSET WOOLLISCROFT

The Safest Choice in Floor Tiles

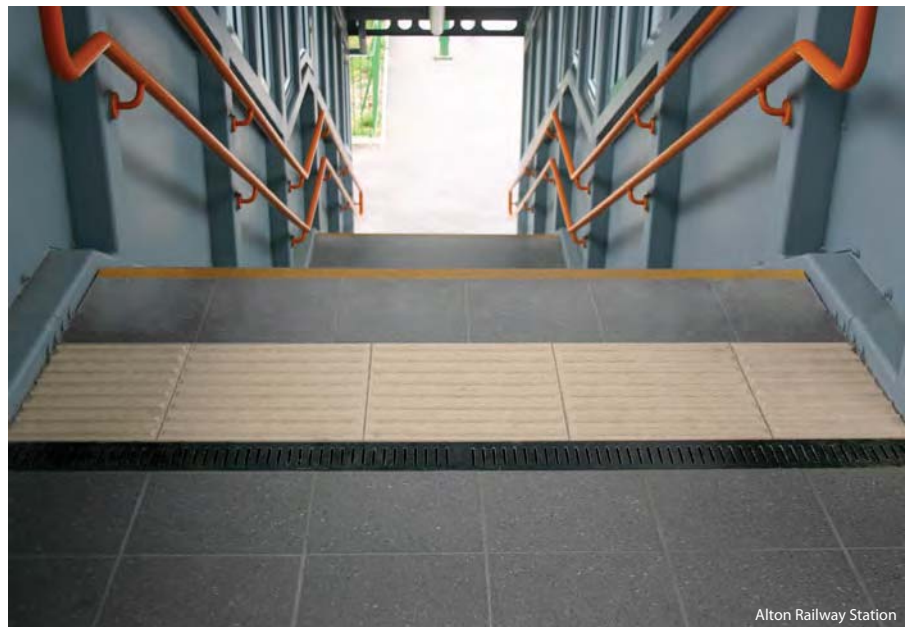




Wokingham Railway Station



Milton Keynes Railway Station



Alton Railway Station



Contents

Flat.....04-05

Textured.....06-07

Luna.....08-09

Pinhead.....10-11

Tetra.....12-13

Multidisc.....14-15

Gritstone Aggregate.....16-17

Pebbled Aggregate.....18-19

Elite.....20

Tactile Blister.....21

Tactile Corduroy.....21

Product Guide.....22-24

Fittings.....25

Technical Information.....26-31

Welcome to Dorset Woolliscroft

The Dorset Woolliscroft Collection now consists of a comprehensive range of quality, hard wearing slip resistant porcelain floor tiles and fittings, all fully vitrified and suitable for internal and external use.

A long history of tile making

Poole in Dorset was the starting place of Carter & Co, a tile making company established in 1873. The company took over Poole Pottery in the 1920s, later becoming part of Pilkington's Tiles in 1964. In another part of the country, George Woolliscroft & Son were making tiles from around 1884 at Etruria and Hanley in Staffordshire, a location closely associated with Josiah Wedgwood. They produced a wide range of tiles, including tile blanks for other tile decorating companies. They concentrated on floor tiles from 1910, supplying tiles for many locations including the London Underground. In 2000 Pilkington's Tiles took the company over and the floor tile range became Dorset Woolliscroft, a bringing together of two names which symbolised high quality, hard wearing porcelain tiling.

New beginnings

The Dorset Woolliscroft brand was acquired by Original Style in 2010 – we have now given it a new lease of life which should ensure its continuation and success for many more decades.

These Dorset Woolliscroft slip resistant and safety floor tile ranges have been developed with specific areas of usage in mind, and applications include dry and wet areas with heavy foot fall, wheeled traffic areas, and weather exposed areas – in fact, anywhere slip resistant qualities are required.

The tiles offer exceptional performance and safety standards for industrial, commercial, leisure and domestic markets and have been thoroughly tested using the most

widely recognised slip resistance test methods currently available.

The long term

More and more manufacturers, architects and designers are challenged to provide environmentally friendly materials (including flooring) which offer long term and cost effective solutions. This means that life cycle costing of materials is becoming increasingly important. Many studies support the view that ceramic flooring is the most economical and environmentally friendly solution over a lifespan of 50 years.





Flat Stone 148 x 148 x 9mm DW-FLSTO1515

Flat

This tile has an attractive smooth surface which belies its anti-slip qualities. It's an extremely versatile floor covering for dry area applications including shod external areas.

- ✓ improved R10 finish
- ✓ residential settings
- ✓ heavy duty and high traffic areas – such as industrial flooring, public areas, pubs, bars and restaurants
- ✓ external areas
- ✓ can be used for wall tiling and cladding
- ✓ easy to keep clean



See page 22 for key



White
148 x 148 x 9mm DW-FLWHT1515
300 x 300 x 9mm DW-FLWHT3030



Red
148 x 148 x 9mm DW-FLRED1515



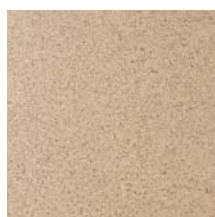
Black
148 x 148 x 9mm DW-FLBLK1515



RE + REX versions
available in all colours.
See page 22



Stone
148 x 148 x 9mm DW-FLSTO1515



Quartz
148 x 148 x 9mm DW-FLQUZ1515
300 x 300 x 9mm DW-FLQUZ3030



Steel Grey
148 x 148 x 9mm DW-FLSGR1515
300 x 300 x 9mm DW-FLSGR3030



Dark Grey
148 x 148 x 9mm DW-FLDGR1515
300 x 300 x 9mm DW-FLDGR3030





Textured Quartz 300 x 300 x 9mm DW-TXQUZ3030

Textured

The subtle surface and good anti-slip features of Textured means it's a general purpose tile that can be used to great effect.

- ✓ retail environments and public areas
- ✓ public transport situations
- ✓ food preparation and manufacturing areas
- ✓ walkways, toilets and areas subject to heavy traffic
- ✓ locker rooms and changing areas
- ✓ internal and external
- ✓ easy to maintain and keep clean
- ✓ can be used with Luna and Gritstone Aggregate for added design versatility



See page 22 for key



Quartz
300 x 300 x 9mm DW-TXQUZ3030

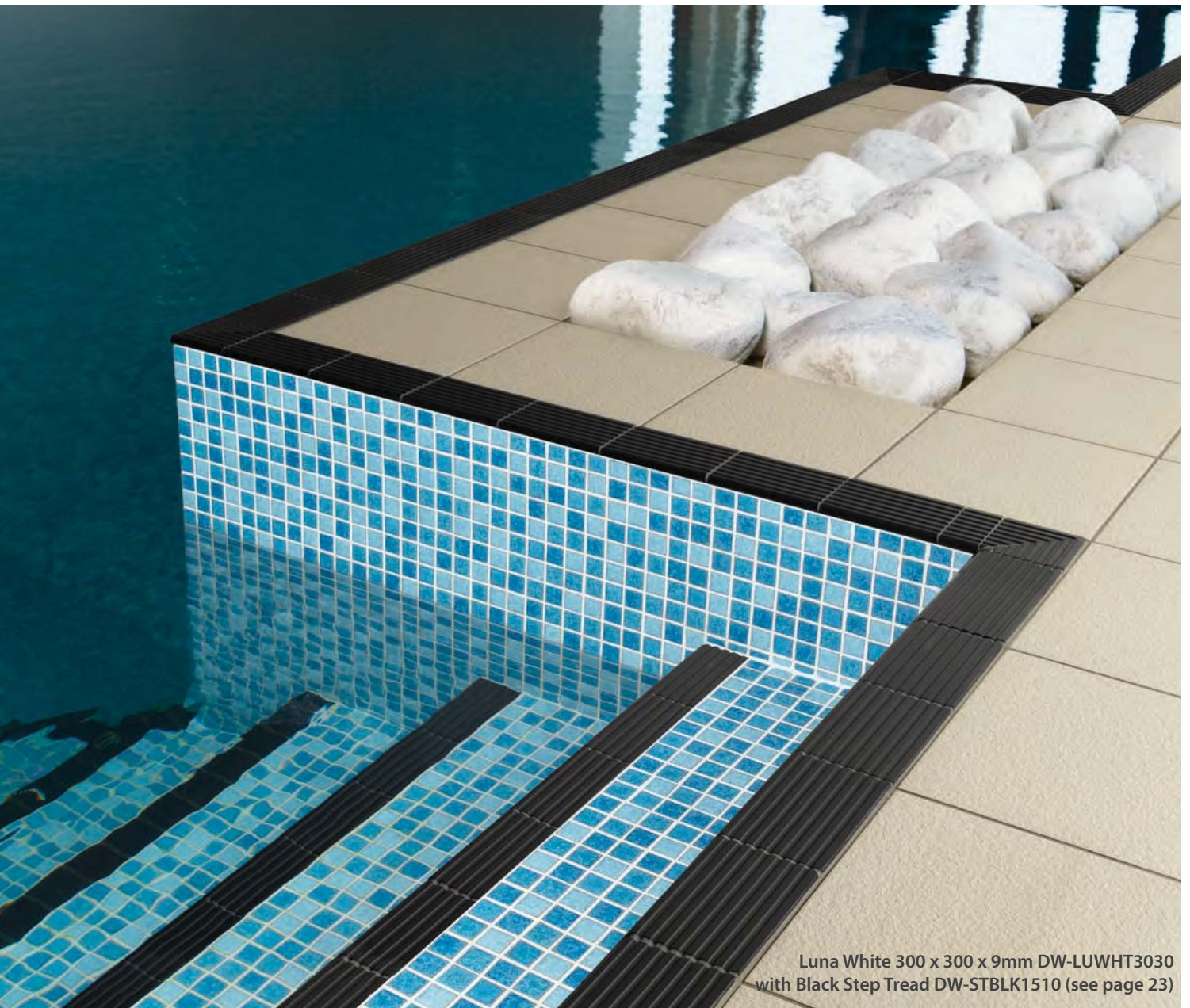


Steel Grey
300 x 300 x 9mm DW-TXSGR3030



Dark Grey
300 x 300 x 9mm DW-TXDGR3030



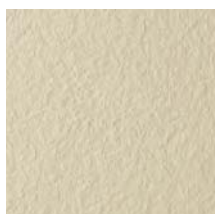


Luna White 300 x 300 x 9mm DW-LUWHT3030
with Black Step Tread DW-STBLK1510 (see page 23)

Luna

Luna's softly textured structure has excellent slip resistant qualities for shod and barefoot in both dry and wet areas.

- ✓ heavy duty, hard working surface
- ✓ commercial and retail installations, heavy foot traffic public areas
- ✓ walkways and heavy foot traffic areas
- ✓ swimming pool surrounds and changing areas
- ✓ walk through shower areas
- ✓ can be used with Gritstone Aggregate and Textured for added design value



White

148 x 148 x 9mm DW-LUWHT1515
300 x 300 x 9mm DW-LUWHT3030



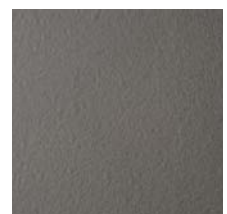
Quartz

148 x 148 x 9mm DW-LUQUZ1515
300 x 300 x 9mm DW-LUQUZ3030



Steel Grey

148 x 148 x 9mm DW-LUSGR1515
300 x 300 x 9mm DW-LUSGR3030



Dark Grey

148 x 148 x 9mm DW-LUDGR1515
300 x 300 x 9mm DW-LUDGR3030





Pinhead White 148 x 148 x 9mm DW-PHWHT1515

Pinhead

A great general purpose slip resistant tile suitable for both wet and dry areas.

- ✓ most internal and external applications
- ✓ light industrial and commercial applications
- ✓ wet areas such as swimming pool changing rooms
- ✓ shower areas
- ✓ toilets



White
148 x 148 x 9mm DW-PHWHT1515



Red
148 x 148 x 9mm DW-PHRED1515



Black
148 x 148 x 9mm DW-PHBLK1515



Stone
148 x 148 x 9mm DW-PHSTO1515



Quartz
148 x 148 x 9mm DW-PHQUZ1515



Steel Grey
148 x 148 x 9mm DW-PHSGR1515



Dark Grey
148 x 148 x 9mm DW-PHDGR1515





Tetra Steel Grey 300 x 300 x 9mm DW-TESGR3030

Tetra

Tetra's attractive surface profile of pyramid shapes provides excellent slip resistant qualities in all areas for bare foot and shodfoot traffic.

- ✓ changing rooms and shower areas in swimming pool installations
- ✓ retail locations
- ✓ light industrial units
- ✓ food preparation areas where heavy soiling is likely
- ✓ good volume displacement properties as the profile has been designed to pierce surface debris
- ✓ external walkways



See page 22 for key



White

148 x 148 x 9mm DW-TEWHT1515



Quartz

148 x 148 x 9mm DW-TEQUZ1515
300 x 300 x 9mm DW-TEQUZ3030



Steel Grey

148 x 148 x 9mm DW-TESGR1515
300 x 300 x 9mm DW-TESGR3030



Dark Grey

148 x 148 x 9mm DW-TEDGR1515
300 x 300 x 9mm DW-TEDGR3030





Multidisc Quartz 148 x 148 x 9mm DW-MDQUZ1515

Multidisc

Good to look at, Multidisc's round raised surface structure is also comfortable underfoot even with bare feet.

- ✓ good general purpose slip resistant tile
- ✓ heavy duty dry and wet areas
- ✓ wet areas
- ✓ bare foot comfort
- ✓ high volume displacement
- ✓ easy to keep clean



White
148 x 148 x 9mm DW-MDWHT1515



Quartz
148 x 148 x 9mm DW-MDQUZ1515



Steel Grey
148 x 148 x 9mm DW-MDSGR1515



Dark Grey
148 x 148 x 9mm DW-MDDGR1515





Gritstone Aggregate Quartz 300 x 300 x 9mm DW-GAQUZ3030

Gritstone Aggregate

Similar in looks to the Textured tile, but with aluminium oxide particles added to the body of the tile, making it exceptionally hard wearing.

- ✓ heavy duty slip resistant floor tile
- ✓ excellent choice for very heavy traffic areas such as transport environments
- ✓ wheeled trolley traffic areas and access ramps
- ✓ food preparation and manufacturing areas
- ✓ good in greasy environments where optimum hygiene and ease of cleaning are of prime consideration
- ✓ suitable for exposure to all types of weather conditions
- ✓ slip resistant qualities are sustainable when cleaned and maintained regularly
- ✓ can be used with Luna and Textured for added design versatility



R11

Slip Resistance

See page 22 for key



Quartz
300 x 300 x 9mm DW-GAQUZ3030



Steel Grey
300 x 300 x 9mm DW-GASGR3030



Dark Grey
300 x 300 x 9mm DW-GADGR3030





Pebbled Aggregate Speckled Dark Grey 300 x 300 x 11mm DW-PASDG3030

Pebbled Aggregate

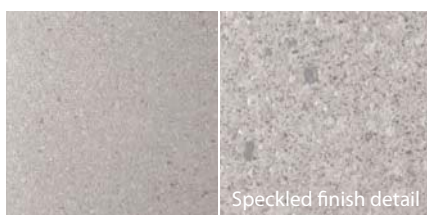
This natural stone look-a-like tile has aggregate throughout the whole body, which means it will deliver excellent longevity and anti-slip properties wherever it is installed.

- ✓ thicker 11mm tiles
- ✓ highly recommended for heavy duty transport environments
- ✓ wheeled traffic areas, station concourses, platforms and footbridges
- ✓ ticket halls and toilets
- ✓ entrances and stairs
- ✓ food preparation areas
- ✓ retail sales, public and commercial environments
- ✓ pubs, bars, restaurants and other food service areas



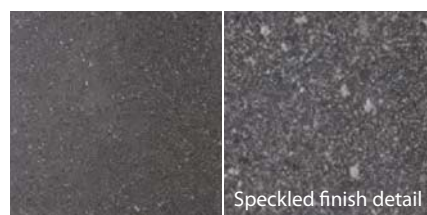
Slip Resistance

See page 22 for key



Speckled finish detail

Speckled Steel Grey
300 x 300 x 11mm DW-PASSG3030



Speckled finish detail

Speckled Dark Grey
300 x 300 x 11mm DW-PASDG3030



Elite Light Grey 300 x 300 x 12mm DW-ELLGR3030

Elite

Our thickest, strongest tile will withstand substantial load distribution and provide a solid hard, slip resistant surface for many different and challenging environments, from retail to transport.

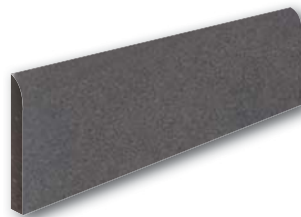
- ✓ thickest in range at 12mm for heavy duty usage – the thicker the tile, the greater the load distribution
- ✓ exceptional strength to withstand impacts and provide a solid stable surface
- ✓ 23 microns surface roughness (R10) for highest level of abrasion, coupled with surface hardness and chemical resistance
- ✓ maximum stain resistance and cleanability
- ✓ cushion edged for narrow joints to withstand heavy point of loading and wheeled trolley traffic
- ✓ highly recommended for food and beverage industry, restaurants, pubs, bars and other food service areas
- ✓ also for automotive industry, workshops, showrooms, heavy duty public transport environments, ticket halls, internal stairs and toilets



Light Grey
300 x 300 x 12mm DW-ELLGR3030



Charcoal
300 x 300 x 12mm DW-ELCHC3030



Skirting Detail
300 x 100 x 12mm Charcoal DW-ELCHC3010
300 x 100 x 12mm Light Grey DW-ELLGR3010



Slip Resistance

See page 22 for key



Tactile Corduroy Anthracite 400 x 400 x 12.5mm
 DW-TCANT4040 shown with Gritstone Aggregate
 Steel Grey DW-GASGR3030 300 x 300 x 9mm and Step
 Tread Dark Grey DW-STDGR1510



Tactile Blister Anthracite 400 x 400 x 12.5mm
 DW-TCANT4040 shown with Gritstone Aggregate
 Steel Grey DW-GASGR3030 300 x 300 x 9mm

Tactile

Both Blister and Corduroy Tactiles contain aggregate throughout the tile body, for exceptional hard wearing and sustainable qualities. The 'Blister' profile is designed to warn visually impaired people of the edge of all off-street platforms, whilst the 'Corduroy' profile is designed to warn visually impaired people of the presence of specific hazards and implies 'proceed with caution'. Both profiles are available in two contrasting LRV colours.

- ✓ thickness of 12.5mm
- ✓ highly recommended for very heavy traffic areas such as public transport environments
- ✓ profile conforms to British and European standards
- ✓ meet the requirements of the Joint Mobility Unit of the RNIB, DETR and the CAE
- ✓ exceptional performance and safety standards



Tactile Blister
 Sand
 400 x 400 x 12.5mm
 DW-TBSND4040



Tactile Blister
 Anthracite
 400 x 400 x 12.5mm
 DW-TBANT4040



Tactile Corduroy
 Sand
 400 x 400 x 12.5mm
 DW-TCSND4040



Tactile Corduroy
 Anthracite
 400 x 400 x 12.5mm
 DW-TCANT4040

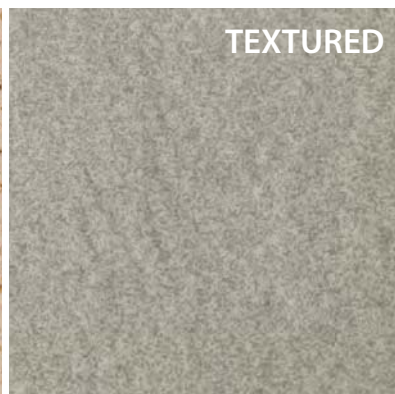
Specifications

	Wet Areas (Barefoot)	Wet Areas (Shod)	Heavy Duty Areas	Trolley Traffic Areas	Industrial Areas	Workshop Areas	Workshop Areas (without liquids)	Bars & Restaurants	Food Prep. Areas	External Ramps (angle dependant)	Slip Rating (R)	Pendulum Test (Dry)	Pendulum Test (Wet)	Volume Displacement	Chemical/Oxidising Stain Resistance	Paste, Film Stain Resistance
FLAT 148 x 148 x 9mm (5 ^{13/16} X 5 ^{13/16} X 3/8")			✓	✓	✓	✓	✓				R10	55	38		4	5
FLAT 300 x 300 x 9mm (11 ^{7/8} X 11 ^{7/8} X 3/8")			✓	✓	✓	✓	✓				R10	55	44		4	5
TEXTURED 300 x 300 x 9mm (11 ^{7/8} X 11 ^{7/8} X 3/8")	✓	✓	✓	✓	✓	✓	✓	✓			R11/B	56	47		4	5
LUNA 148 x 148 x 9mm (5 ^{13/16} X 5 ^{13/16} X 3/8")	✓	✓	✓		✓	✓	✓	✓	✓		R12/C	60	54		4	5
LUNA 300 x 300 x 9mm (11 ^{7/8} X 11 ^{7/8} X 3/8")	✓	✓	✓		✓	✓	✓	✓	✓		R12/C	60	54		4	5
PINHEAD 148 x 148 x 9mm (5 ^{13/16} X 5 ^{13/16} X 3/8")	✓	✓	✓	✓	✓	✓	✓		✓		R11/C	62	54	V4	4	5
TETRA 148 x 148 x 9mm (5 ^{13/16} X 5 ^{13/16} X 3/8")	✓	✓	✓	✓	✓	✓	✓	✓	✓		R11/C	65	55	V4	4	5
TETRA 300 x 300 x 9mm (11 ^{7/8} X 11 ^{7/8} X 3/8")	✓	✓	✓	✓	✓	✓	✓	✓	✓		R11/C	65	55	V4	4	5
MULTIDISC 148 x 148 x 9mm (5 ^{13/16} X 5 ^{13/16} X 3/8")	✓	✓	✓	✓	✓	✓	✓	✓	✓		R12/C	70	58	V6	4	5
GRITSTONE AGGREGATE 300 x 300 x 9mm (11 ^{7/8} X 11 ^{7/8} X 3/8")		✓	✓	✓	✓	✓	✓	✓	✓		R11	58	50		4	5
ELITE 300 x 300 x 12mm (11 ^{7/8} X 11 ^{7/8} X 1/2")			✓	✓	✓	✓	✓				R10	57	36		4	5
PEBBLED AGGREGATE 300 x 300 x 11mm (11 ^{7/8} X 11 ^{7/8} X 7/16")		✓	✓	✓	✓	✓	✓	✓			R11	56	44			

All products are fully vitrified, making them frost resistant and suitable for external use.
For a full list of test results please visit www.dorsetwoolliscroft.com



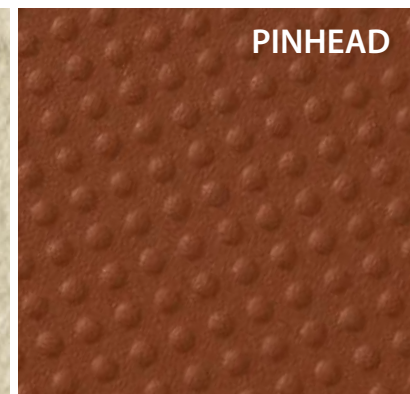
FLAT



TEXTURED



LUNA

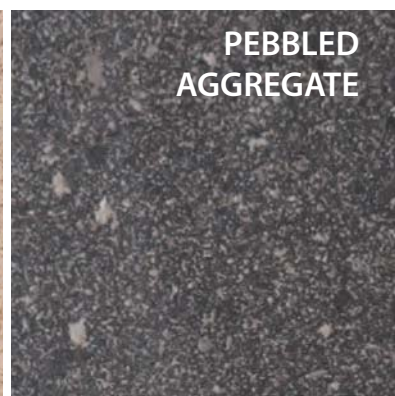
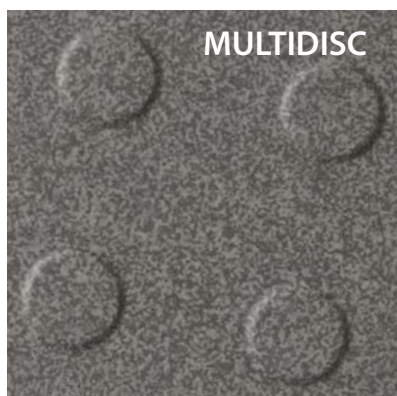


PINHEAD



Codes

	WHITE	QUARTZ	STONE	RED	STEEL GREY	DARK GREY	BLACK
FLAT 148 x 148 x 9mm (5 ¹³ / ₁₆ x 5 ¹³ / ₁₆ x 3 ³ / ₈ ")	DW-FLWHT1515	DW-FLQUZ1515	DW-FLSTO1515	DW-FLRED1515	DW-FLSGR1515	DW-FLDGR1515	DW-FLBLK1515
FLAT 300 x 300 x 9mm (11 ⁷ / ₈ x 11 ⁷ / ₈ x 3 ³ / ₈ ")	DW-FLWHT3030	DW-FLQUZ3030	-	-	DW-FLSGR3030	DW-FLDGR3030	-
TEXTURED 300 x 300 x 9mm (11 ⁷ / ₈ x 11 ⁷ / ₈ x 3 ³ / ₈ ")	-	DW-TXQUZ3030	-	-	DW-TXSGR3030	DW-TXDGR3030	-
LUNA 148 x 148 x 9mm (5 ¹³ / ₁₆ x 5 ¹³ / ₁₆ x 3 ³ / ₈ ")	DW-LUWHT1515	DW-LUQUZ1515	-	-	DW-LUSGR1515	DW-LUDGR1515	-
LUNA 300 x 300 x 9mm (11 ⁷ / ₈ x 11 ⁷ / ₈ x 3 ³ / ₈ ")	DW-LUWHT3030	DW-LUQUZ3030	-	-	DW-LUSGR3030	DW-LUDGR3030	-
PINHEAD 148 x 148 x 9mm (5 ¹³ / ₁₆ x 5 ¹³ / ₁₆ x 3 ³ / ₈ ")	DW-PHWHT1515	DW-PHQUZ1515	DW-PHSTO1515	DW-PHRED1515	DW-PHSGR1515	DW-PHDGR1515	DW-PHBLK1515
TETRA 148 x 148 x 9mm (5 ¹³ / ₁₆ x 5 ¹³ / ₁₆ x 3 ³ / ₈ ")	DW-TEWHT1515	DW-TEQUZ1515	-	-	DW-TESGR1515	DW-TEDGR1515	-
TETRA 300 x 300 x 9mm (11 ⁷ / ₈ x 11 ⁷ / ₈ x 3 ³ / ₈ ")	-	DW-TEQUZ3030	-	-	DW-TESGR3030	DW-TEDGR3030	-
MULTIDISC 148 x 148 x 9mm (5 ¹³ / ₁₆ x 5 ¹³ / ₁₆ x 3 ³ / ₈ ")	DW-MDWHT1515	DW-MDQUZ1515	-	-	DW-MDSGR1515	DW-MDDGR1515	-
GRITSTONE AGGREGATE 300 x 300 x 9mm (11 ⁷ / ₈ x 11 ⁷ / ₈ x 3 ³ / ₈ ")	-	DW-GAQUZ3030	-	-	DW-GASGR3030	DW-GADGR3030	-
					LIGHT GREY	CHARCOAL	
ELITE 300 x 300 x 12mm (11 ⁷ / ₈ x 11 ⁷ / ₈ x 1 ¹ / ₂ ")	-	-	-	-	DW-ELLGR3030	DW-ELCHC3030	-
					SPECKLED STEEL GREY	SPECKLED DARK GREY	
PEBBLED AGGREGATE 300 x 300 x 11mm (11 ⁷ / ₈ x 11 ⁷ / ₈ x 7 ¹ / ₁₆ ")	-	-	-	-	DW-PASSG3030	DW-PASDG3030	-

In this brochure we quote nominal dimensions which are subject to slight variation with internationally accepted standards. Where applicable, Original Style tiles are manufactured to conform to BS EN 14411.



Tactile Blister Specifications



<p>Blister Anthracite 400 x 400 x 12.5mm (15¹³/₁₆ X 15¹³/₁₆ X 1/2") excluding protrusions</p> 	<p>Fully Vitrified Dust Pressed Tiles – Annex G, Group Bla BS EN 14411:2012</p>	<p>Light Reflectance Value 8.3</p>
<p>Blister Sand 400 x 400 x 12.5mm (15¹³/₁₆ X 15¹³/₁₆ X 1/2") excluding protrusions</p> 	<p>Fully Vitrified Dust Pressed Tiles – Annex G, Group Bla BS EN 14411:2012</p>	<p>Light Reflectance Value 46.4</p>

SATRA TM144 Dynamic Coefficient of Friction for Blister Sand and Anthracite Tactile

Test condition	Tested along		Tested across		Tested at 45 degrees		Pass/Fail CoF	Pass/Fail distance below 0.4 CoF
	CoF	Distance CoF below 0.4(mm)	CoF	Distance CoF below 0.4(mm)	CoF	Distance CoF below 0.4(mm)		
Dry	0.80	10	0.77	10	0.59	5	Pass	Pass
Wet	0.70	5	0.64	10	0.54	0	Pass	Pass

With regard to slip resistance, the samples submitted under reference 'Tactile Corduroy Floor Tiles' have satisfied the requirements of London Underground E6464 A2 Engineering Standard – Rolling Stock Floor Coverings. Section 8.4 (SATRA TM144) Slip Resistance of Profiled Floors.

Tactile Corduroy Specifications

<p>Corduroy Anthracite 400 x 400 x 12.5mm (15¹³/₁₆ X 15¹³/₁₆ X 1/2") excluding protrusions</p> 	<p>Fully Vitrified Dust Pressed Tiles – Annex G, Group Bla BS EN 14411:2012</p>	<p>Light Reflectance Value 8.3</p>
<p>Corduroy Sand 400 x 400 x 12.5mm (15¹³/₁₆ X 15¹³/₁₆ X 1/2") excluding protrusions</p> 	<p>Fully Vitrified Dust Pressed Tiles – Annex G, Group Bla BS EN 14411:2012</p>	<p>Light Reflectance Value 46.4</p>

SATRA TM144 Dynamic Coefficient of Friction for Corduroy Sand and Anthracite Tactile

Test condition	Tested along		Tested across		Tested at 45 degrees		Pass/Fail CoF	Pass/Fail distance below 0.4 CoF
	CoF	Distance CoF below 0.4(mm)	CoF	Distance CoF below 0.4(mm)	CoF	Distance CoF below 0.4(mm)		
Dry	0.49	5	0.64	15	0.61	0	Pass	Pass
Wet	0.44	5	0.53	17.5	0.60	5	Pass	Pass

With regard to slip resistance, the samples submitted under reference 'Tactile Corduroy Floor Tiles' have satisfied the requirements of London Underground E6464 A2 Engineering Standard – Rolling Stock Floor Coverings. Section 8.4 (SATRA TM144) Slip Resistance of Profiled Floors.

All products are fully vitrified, making them frost resistant and suitable for external use. For a full list of test results please visit www.dorsetwoolliscroft.com

In this brochure we quote nominal dimensions which are subject to slight variation within internationally accepted standards. Where applicable, Original Style tiles are manufactured to conform to BS EN 14411.

Fittings Fully vitrified, colour co-ordinating fittings for Dorset Woolliscroft floor tiles



Round Edge (RE)

148 x 148 x 9mm ($5\frac{13}{16} \times 5\frac{13}{16} \times \frac{3}{8}$ "



Round Edge Ext. (REX)

148 x 148 x 9mm ($5\frac{13}{16} \times 5\frac{13}{16} \times \frac{3}{8}$ "



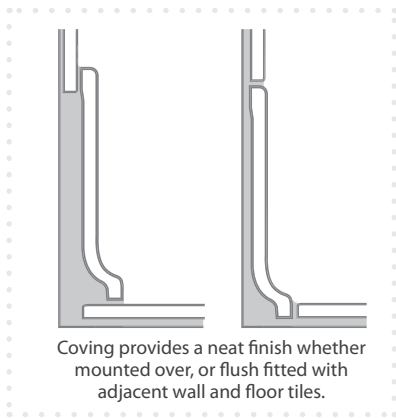
Pool Grip

148 x 100 x 12mm ($5\frac{13}{16} \times 4 \times \frac{1}{2}$ "



Coving

148 x 109 x 9mm ($5\frac{13}{16} \times 4\frac{5}{16} \times \frac{3}{8}$ "



Coving Ext. Angle

Coving Int. Angle

109 x 30 x 9mm ($4\frac{5}{16} \times 1\frac{3}{16} \times \frac{3}{8}$ "



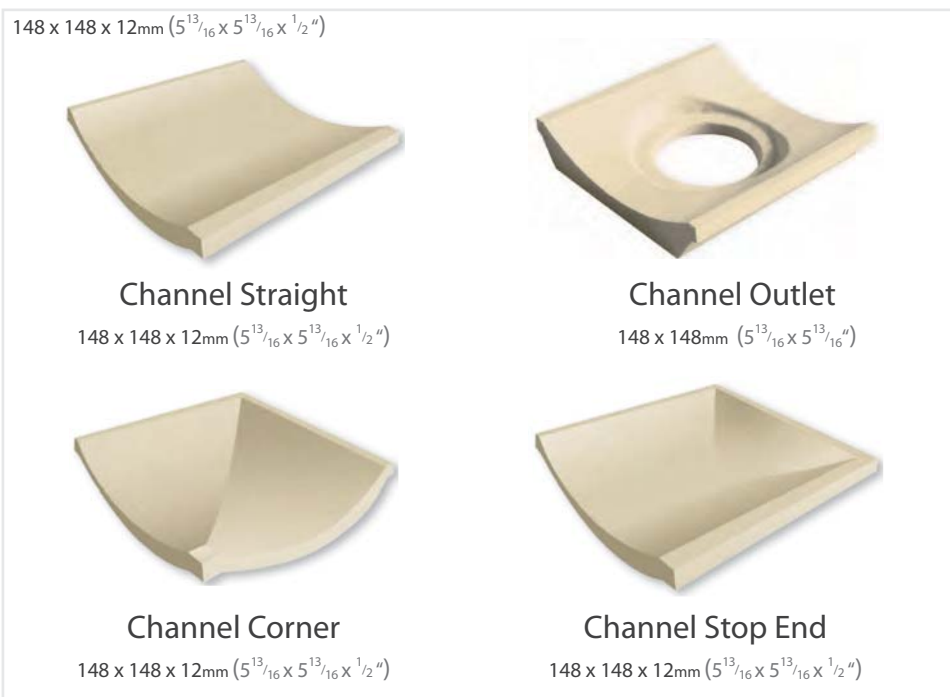
Step Tread

148 x 100 x 12mm ($5\frac{13}{16} \times 4 \times \frac{1}{2}$ "



Step Tread Ext. Angle

100 x 100 x 12mm ($4 \times 4 \times \frac{1}{2}$ "



148 x 148 x 12mm ($5\frac{13}{16} \times 5\frac{13}{16} \times \frac{1}{2}$ "

Channel Straight

148 x 148 x 12mm ($5\frac{13}{16} \times 5\frac{13}{16} \times \frac{1}{2}$ "

Channel Outlet

148 x 148mm ($5\frac{13}{16} \times 5\frac{13}{16}$ "

Channel Corner

148 x 148 x 12mm ($5\frac{13}{16} \times 5\frac{13}{16} \times \frac{1}{2}$ "

Channel Stop End

148 x 148 x 12mm ($5\frac{13}{16} \times 5\frac{13}{16} \times \frac{1}{2}$ "

	WHITE	QUARTZ	STONE	RED	STEEL GREY	DARK GREY	BLACK
ROUND EDGE (RE)	DW-REWHT1515	DW-REQUZ1515	DW-RESTO1515	DW-RERED1515	DW-RESGR1515	DW-REDGR1515	DW-REBLK1515
ROUND EDGE EXT. (REX)	DW-RXWHT1515	DW-RXQUZ1515	DW-RXSTO1515	DW-RXRED1515	DW-RXSGR1515	DW-RXDGR1515	DW-RXBLK1515
COVING	DW-CVWHT1511	DW-CVQUZ1511	DW-CVSTO1511	DW-CVRED1511	DW-CVSGR1511	DW-CVDGR1511	DW-CVBLK1511
COVING EXT. ANGLE	DW-CEWHT1103	DW-CEQUZ1103	DW-CESTO1103	DW-CERED1103	DW-CESGR1103	DW-CEDGR1103	DW-CEBLK1103
COVING INT. ANGLE	DW-CIWHT1103	DW-CIQUZ1103	DW-CISTO1103	DW-CIRED1103	DW-CISGR1103	DW-CIDGR1103	DW-CIBLK1103
STEP TREAD	DW-STWHT1510	DW-STQUZ1510	-	-	-	DW-STDGR1510	DW-STBLK1510
STEP TREAD EXT. ANGLE	DW-SAWHT1010	DW-SAQUZ1010	-	-	-	DW-SADGR1010	DW-SABLK1010
CHANNEL STRAIGHT	DW-CAWHT1515	DW-CAQUZ1515	-	-	-	DW-CADGR1515	-
CHANNEL CORNER	DW-CRWHT1515	DW-CRQUZ1515	-	-	-	DW-CRDGR1515	-
CHANNEL OUTLET	DW-CTWHT1515	DW-CTQUZ1515	-	-	-	DW-CTDGR1515	-
CHANNEL STOP END	DW-CSWHT1515	DW-CSQUZ1515	-	-	-	DW-CSDGR1515	-
POOL GRIP	DW-PGWHT1510	-	-	-	-	-	DW-PGBLK1510

Technical Information DORSET WOOLLISCROFT FLOOR TILES

There is a duty of care upon all flooring designers, manufacturers, distributors, installers, contractors, and on the architects who specify flooring, to ensure that flooring surfaces are fit for purpose and do not pose any safety risks.

The Equality Act imposes obligations on those concerned to offer accessible design solutions that meet the needs of everyone. This means that building designers and specifiers must consider the implications of the Equality Act and their ability to provide buildings that do not discriminate against disabled people (physical or mental impairments).

To complement our slip resistant safety floor tile range, we also offer two 400 x 400 x 12.5mm tactile surfaces in 'Blister' and 'Corduroy' profiles, which conform to British and European standards and meet the requirements of the Joint Mobility Unit of the RNIB, DETR and the CAE.

When it comes to specifying a floor covering, Dorset Woolliscroft fully vitrified floor tiles are your safest choice for many different situations, both internal and external use. They all comply with, and in most cases exceed, recommended requirements and regulations after rigorous internal and independent testing.

Important Information

Please read through the following information carefully. It sets out the current situation (at the time of printing this brochure) regarding current regulations, testing methods, specifications of Dorset Woolliscroft floor tiles, fixing, cleaning and maintenance information, and our limits of liability.

Please check the suitability of the floor tiles and fixings before specifying, ordering and installation. If you are uncertain, please ask your Dorset Woolliscroft supplier or contact our Customer Services Department on 01392 473030 for further information and assistance.

SLIP RESISTANCE

Our Tiles

Our Dorset Woolliscroft products are tested for slip resistance and other properties using a range of methods (see 'Current Testing Methods' section below), and the results are included with the technical specification for each product. *Please visit www.dorsetwoolliscroft.com for further information or the relevant product pages in this brochure.*

Our tiles have also been independently tested by CERAM, the global expert in materials testing, analysis and consultancy. For more information please visit www.ceram.com.

Responsibility for Preventing Slips and Trips

According to the Health and Safety Executive (HSE)

'Slips and trips account for around one in three non-fatal major injuries, and for over one in five over 3-day injuries in workplace areas throughout Great Britain, a total of at least 35,000 injuries per annum (one serious slip accident every 3 minutes).'

Currently there are a number of different standards to deal with the issue of slip resistance for floor surfaces in the UK. However the HSE outlines the responsibilities for preventing slips and trips at workplaces and public areas for flooring manufacturers, architects and designers, employers, workers and footwear manufacturers.

With slips and trips being such a common health risk in most buildings, architects, specifiers and clients need to specify floors which are suitably slip resistant for their intended use not only for immediate usage but also for the longer term.

Assessing and Testing Slip Resistance

The assessment of slip resistance: The HSE approach

The law requires that floors must not be slippery so they put people's safety at risk (The Workplace (Health, Safety and Welfare) Regulations 1992).¹ It was thought that the characteristics of floor surface materials needed for satisfactory slip resistance were difficult to assess. However, research carried out by HSL, in conjunction with the UK Slip Resistance Group (UKSRG) and the British Standards Institution, has shown they are not. The slipperiness of flooring materials can be accurately assessed by using commercially available, portable scientific test instruments. ¹ *Workplace health, safety and welfare. Workplace (Health, Safety and Welfare) Regulations 1992.*

Approved Code of Practice L24 HSE Books 1992 ISBN 0 7176 0413 6

The HSE has published comprehensive guidance of how and why slips and trips occur and how to prevent them. The current preference is for the use of the pendulum or the ramp based test methods for assessment of pedestrian floor surfaces or flooring materials, with additional information from surface roughness measurement where applicable. A software package to allow an operator to assess the slip potential of pedestrian walkway surfaces can be downloaded from the HSE website. For further information, please visit www.hse.gov.uk.

We recommend that specifiers seek expert and current guidance as the research into reproducible and representative tests to measure the slip resistance of flooring materials is ongoing.

We have set out the five main slip resistant measurements below to help you to choose the Dorset Woolliscroft tiles that most closely match the requirements of your installation.

SLIP RESISTANCE CURRENT TESTING METHODS

Pendulum Test BS7976-2 Rubber Slider

- For determining the coefficient of friction under wet and dry conditions using a Four S Rubber Slider (also known as Slider 96)
- Apparatus is portable (just); useful for determining slip resistance of floorings in use
- Presently accepted limits for flooring using this technique are:

SLIP POTENTIAL	SLIP RESISTANCE VALUE USING 4S
High	0 to 24
Moderate	25 to 35
Low	36+

*All Dorset Woolliscroft tiles exceed the value of 36 in both wet and dry conditions.

Pendulum Test BS7976 Part 2 TRRL (Transport & Road Research Laboratory)

- A swinging test apparatus to determine the wet co-efficient of friction using a TRRL rubber slider

SLIP POTENTIAL	SLIP RESISTANCE VALUE TRRL 55
High	19 and below
Moderate	20 to 39
Low	40 to 74

Shoe Shod Ramp Test DIN 51130

- For testing slip resistance of a surface to shoe shod traffic tested on a ramp in the presence of a surface lubricant
- Most useful for assessing profiled tiles, or tiles to be used in areas where there is a high risk of contamination
- NB: the lowest classification is R9, and as this is not a good specification for slip resistance, it should be supported by a pendulum value. The range for R9 has recently been changed from a 3° - 10° to 6° - 10° because of problems with misinterpretation of the R9 category.

R VALUE	DEGREES
R9	6° - 10°
R10	10° - 19°
R11	19° - 27°
R12	27° - 35°
R13	36° +

*All Dorset Woolliscroft flat tiles are rated R10, all structured tiles are rated at least R11. For the full list please see pages 22-23.

Surface Roughness Measurement (RZ)

- For measuring surface microroughness stated as an average roughness figure in microns, RzDIN, which may be useful to assess slip risk
- A portable test method using instruments such as Mitutoyo Surf test SJ201P, Surtronic Duo, Surtronic 25
- Most relevant on flat tiles, as it may not be possible to get a reading on a tile with an uneven surface
- Suitable for on site testing

Barefoot Ramp Test DIN 51097

- For testing the slip resistance of floor tiles under wet and barefoot conditions
- The tiles are fixed on a ramp which is made wet. A tester walks on them with the ramp set at a succession of increasing angles until the tester slips, and the angle at which the slip occurs is recorded.

- A, B or C classifications indicate slip resistance levels. We would normally recommend that tiles for use in wet barefoot areas achieve classification B or C, depending on the incline of the floor.

CAT.	LOWER LIMIT	UPPER LIMIT	AREA
A	12°	17°	<ul style="list-style-type: none"> • Barefoot hallways (mainly dry) • Individual and group changing rooms with lockers • Pool floor in the non swimmer areas, where the water level exceeds 80cm
B	18°	23°	<ul style="list-style-type: none"> • Barefoot hallways, if not classified in A • Showers • Area surrounding the disinfectant sprayers • Pool surrounds • Pool floor in the non swimmer areas where the water level is less than 80cm in parts • Pool floor in the non swimmer areas in the tide effect pool • Lift slab areas • Paddling pools • Steps leading in to the water • Steps, of maximum 1m width with hand rails, leading into the water • Steps outside the pool area
C	>23°		<ul style="list-style-type: none"> • Steps leading into the water, if not classified in B • Foot paths • Inclined pool borders

*The Dorset Woolliscroft tiles which are suitable for wet barefoot areas are all C value. For the full list please see pages 22-23.

SATRA TM144 Dynamic Coefficient of Friction Test

- To assess the potential of slipping when walking on flooring material in footwear
- It tests the conditions of slip in different stages of the walking gait (heel strike, lift-off or shoe flat to the floor) in different inclines
- It determines the dynamic coefficient of friction (cof) between footwear outsoles and flooring surfaces under conditions simulating those experienced at the most critical parts of the typical walking step
- The value must not fall below 0.40 for both dry and wet conditions for more than 20mm traverse, taking into account the representative cycle from the centre of a 100mm trace after the first 20mm of movement in all directions under test

Displacement Volume Value (V)

- The displacement volume value for a floor is the measure of the space between the foot and the floor surface
- Higher values relate to a greater volume of debris that can be held by the texture without compromising the slip resistance of the tile
- Values less than V4 are not recorded

V VALUE	VOLUME OF DEBRIS
V4	4cm ³ / dm ²
V6	6cm ³ / dm ²
V8	8cm ³ / dm ²

*There are a number of Dorset Woolliscroft tiles which are suitable for this type of location rated both V4 and V5 DVV. See pages 22-23.

Please visit www.dorsetwoolliscroft.com for all test results

Slip readings - please note:

Values issued by Original Style for slip resistance relate to the test results as supplied from Ceram or from in-house testing. These values can change during the lifetime of a tile as a result of the following factors: Surface wear / Poor cleaning regimes / Sealants or wax coatings, correctly or incorrectly applied / Chemical exposures which may acid etch the surface / Body fats build up especially when placed in barefoot areas

If in any doubt always retest the surface on a regular basis.

HYGIENE AND SLIP RESISTANCE REQUIREMENTS IN MANUFACTURING AND FOOD PREPARATION AREAS

Current hygiene legislation, together with Health and Safety Requirements and the Construction Design and Management (CDM) Regulations, place a requirement upon the specifier, building owner and facilities manager to eliminate all foreseeable risks, by design, by layout, and by specification of materials. Many factors need to be considered when deciding upon the best surfaces for installation. Hygiene (cleanability) and slip resistance are important factors in any working environment, but they should receive special attention when being specified for food preparation areas. Please visit www.tiles.org.uk to download Technical Advice Note 7 for details regarding specifications and installation advice, and www.legislation.gov.uk for more details and the latest regulations.

Independent Research Regarding Cleanability

Test results indicate that fully vitrified products are able to discourage the ingress of bacteria into the surface of the tile and facilitate the greatest ease of cleaning. Research carried out at Manchester Metropolitan University concluded that there was no significant difference in ease of decontamination between Dorset Woolliscroft fully vitrified tiles and stainless steel.

STAIN RESISTANCE

Determination of Resistance to Stains - EN 10545-14

Testing for resistance to stains is done by subjecting the tiles to various substances and then attempting to remove them using a range of cleaning regimes. The substances used are pastes, oils, chemicals and films. The Classifications are 1-5, where 1 indicates that the stain could not be removed using standard cleaning procedures and 5 indicates that the stain could be easily removed.

The Paste, Chemical /Oxidising and Film Stain test results for all Dorset Woolliscroft tiles were a minimum of 4. See chart on pages 22-23 for results.

DEEP ABRASION RESISTANCE

Deep Abrasion Resistance EN 10545-6

The degree to which the surface of a floor tile will withstand abrasion is tested under given conditions by measuring loss of volume using a rotating disc and abrasive material. The results are measured as Volume per mm (Vmm³). Hard wearing tiles must be measure lower than 175Vmm³.

All Dorset Woolliscroft tiles conform to the EN standard above.

ACCESSIBLE DESIGN

The Equality Act 2010 imposes obligations on those concerned with the provision of services to the public in the private, public and voluntary sectors. Responding to these duties means that building designers and specifiers are required to anticipate and overcome restrictions that may prevent people with disabilities making full use of premises and surroundings.

Design solutions need to meet the needs of everyone, including those with visual impairments, simultaneously providing an attractive environment for all users. Contrasting colour schemes on critical surfaces, for example contrasting colours on step edges, help some people with visual impairments to have a heightened awareness of physical features.

Light Reflectance Value

Coloured surfaces such as tiles and fittings can be measured for their Light Reflectance Value (LRV), where a score is given on a scale of 0 to 100. Dark, matt surfaces absorb a lot of light, for example, a matt black tile typically has a LRV of 6. Light, glossy surfaces reflect most of the light, so a pure white gloss tile typically has a LRV of 85. All other tile colours fit in between these two extremes. Where recommended to provide a contrasting colour scheme, building regulations recommend that tiles with a 30 point LRV difference or more are selected for adjacent surfaces, however a 20 point difference may be sufficient in large areas.

Adequate contrast can be achieved by selecting and installing tiles with a minimum of 20 to an optimum of 30+ LRV differentials in tonal variance, harmonising variance, or contrasting (opposing colour) variance.

LRV results for Dorset Woolliscroft tiles and fittings that show there is a selection of contrasting colour options:

TILE COLOUR LIGHT	REFLECTANCE VALUE
White	50.7
Red	13.9
Quartz	37.3
Stone	53.4
Sand	46.4
Steel Grey	39.4
Dark Grey	16.3
Anthracite	8.3
Black	6.8

Please refer to the following for more information:

- *BSI Code of Practice 'BS 8300:2009+A1:2010 Design of buildings and their approaches to meet the needs of disabled people'*
- *Building Regulations Approved Document M Access to and Use of Buildings and BS8300:2001 Amendment 1*
- *The Equality Act 2010 Code of Practice*

FIXING

Grout: highly pigmented grout may stain the tiles. Please test before installation.

Please note, any fixing information mentioned above does not apply in the USA. In the USA please follow the recommendations of a reputable adhesive manufacturer and always comply with American National Standards Institution (ANSI) specifications as set out in the Handbook for Ceramic Tile Installation published by the Tile Council of America. Useful information can be found here: www.ctioa.org, www.tileusa.com

Movement Joints

For interior or exterior floor tile installations, movement joints should be located:

- over existing structural movement joints
- around the perimeter of the floor and where tiling abuts columns, curbs, steps and plant fixed to the base
- in large floor areas tiling should be divided into bays not exceeding 8-10m intervals. On suspended floors the bay size should be reduced and additional joints provided over supporting walls and beams

All floor tile joints should extend throughout the depth of the tile, bed and screed and should be 6-10mm in width.

They should be designed to avoid being subjected to the effect of wheeled traffic and where this is not possible metal reinforced joints should be specified.

AFTER FIXING

It is the responsibility of the owner to provide for routine inspection, appropriate maintenance, and to assure compatibility of all cleaning methods/products with grout and mortar manufacturers. Appropriate maintenance requirements are determined by the site environment and the specific use of the installation. All damaging contaminants must be removed from grout joints sufficiently and regularly to avoid permanent damage from exposure to food, biological waste, industrial chemicals and aggressive cleaning solutions. Consult manufacturers for recommended procedures.

CLEANING AND MAINTENANCE

Follow the cleaning procedures outlined below to ensure that all Dorset Woolliscroft floors are maintained to a high standard of cleanliness, slip resistance, hygiene and appearance. Detailed cleaning specifications can be found at www.dorsetwoolliscroft.com.

Newly Laid Floors

There may be residual cement on the tile surface of newly laid floors. All traces of this must be removed by applying a mildly acidic decementing solution, which must be rinsed off thoroughly. Clean regularly as specified below.

Regular Cleaning

Regular cleaning with warm water (or hot water for oil and grease) and a neutral or mildly alkaline (pH to 8) detergent will remove all but the most stubborn dirt. Mix the detergent as recommended by the manufacturer. The water/detergent mixture must be left on the floor for enough time (5-15 minutes) to allow it to penetrate and emulsify the dirt. Rinse thoroughly with clean water to remove all traces of the detergent mixture.

Large areas of plain or textured surface tiles are best cleaned with rotary, cylindrical or reversing mechanical scrubbing machines as follows:

- 1 Use slow to medium speed rotation. If the machine has a suction drying facility, use it first with the suction facility switched OFF. This permits the water detergent mixture used in the scrubbing process to remain on the floor to penetrate the dirt layer.
- 2 Leave for at least 5-15 minutes to elapse, then repeat the scrubbing operation with clean water only and with the suction drying facility switched ON. It is the rinsing process which removes the dirt.
- 3 Spillages of oil, fat or any material likely to stain or cause a slipping hazard should be removed immediately by using detergent and hot water, followed by a cold water rinse.
- 4 Use warning signs or physically exclude people from wet cleaning areas until they are completely dry.

Longer Term Maintenance

Clean the floor periodically using a rotary, cylindrical or reversing scrubbing machine with the addition of an abrasive powder or fine Silica Sand. These products scour the tiles, remove impacted dirt, and generally refresh the floor without damaging their surface. Remove the residue with clean water and rinse before it can dry out. If high velocity water jets are used for removal of stubborn dirt this will not damage the tiles, but may erode the joints if used regularly. If oil or grease is present, use the jet with warm or hot water and with a pH neutral detergent.

Please note that marks made during installation and with constant use may be more obvious on pale colours. Therefore even Dorset Woolliscroft fully vitrified tiles will require a certain amount of extra cleaning in areas prone to heavy soiling.

NB. These cleaning and maintenance instructions are Dorset Woolliscroft's recommendations and not necessarily exhaustive. The recommendations of manufacturers of cleaning equipment and materials should always be followed.

ENVIRONMENT AND SUSTAINABILITY

Environment

Our products are designed and manufactured with environmental issues in mind. We regularly evaluate our operations to improve in areas of energy and efficiency, reduction of emissions, ecological conservation and use of materials, and we are committed to continue to find new and innovative ways to achieve further improvements in our environmental performance. Our waste management policy ensures that waste is minimised.

Life Cycle Cost and Sustainability

Life cycle costing is becoming increasingly important as manufacturers, architects and designers are challenged to provide and specify total cost-effective materials and solutions. Life cycle costing calculates the cost of a product over its whole lifespan, including owning, operating, maintaining, repairing, recycling and disposing. Dorset Woolliscroft fully vitrified floor tiles are Class A (A = lower overall environmental impact) and many studies support the view that porcelain tiling is the most economical flooring solution over a lifespan of 50 years.

DORSET WOOLLISCROFT SPECIFICATIONS

For detailed individual specifications of all tiles and fittings mentioned in this brochure, please visit www.dorsetwoolliscroft.com.

All Dorset Woolliscroft tiles and fittings are manufactured to conform to BSEN 14411.

SHADING

Some very slight shade variation may occur between different sized tiles of the same colour. Before fixing tiles it is important to lay them out in good light to ensure that any shade difference is evenly distributed.

PHOTOGRAPHY

Owing to variations in studio lighting and printing inks, the tile colours shown in this brochure may differ slightly from those of the actual tiles. It is always advisable to request a sample.

LIMITS OF LIABILITY

Dorset Woolliscroft accepts no liability for the faulty installation of its products. In the case of any claim relating to the tiles themselves, Dorset Woolliscroft's liability, to the extent permitted by law, is limited to either the replacement of the product or a refund of the cost of the product, and does not extend to cover any consequential loss. Claims must be reported within seven working days from receipt of the tiles. Tiles must be inspected prior to installation and claims cannot be considered after the tiles have been installed.

Please be advised that installation constitutes acceptance of the quality, colour, size, texture and shade of the tiles. Dorset Woolliscroft warrants that its tiles conform to their description and are fit for their purpose. Dorset Woolliscroft makes no other express or implied warranty as to fitness or suitability of the products for particular installations. We extend no guarantees, express or implied, as to wear resistance or maintenance procedures. It is imperative to follow grout and adhesive manufacturers' instructions regarding their suitability with our products. If in doubt please consult the grout/adhesive stockist from whom you purchased the products. Dorset Woolliscroft makes no representations as to the fitness for purpose of third party adhesives and grouts.

Please note the use of certain acid based cleaning products may cause some of the tiles to react and change in character.

ALSO FROM ORIGINAL STYLE

We can supply large format full bodied and glazed porcelain products for commercial and retail applications. Our extensive product portfolio also includes traditional and contemporary styles of mosaics, wall tiles, mouldings and borders in ceramic, glass, natural stone and metal, plus a range of mosaics for swimming pools and spas.

We are committed to providing a complete service to the specifier with full technical support in product selection, design and installation.

For more details of our ranges please visit www.originalstyle.com





Slough Railway Station



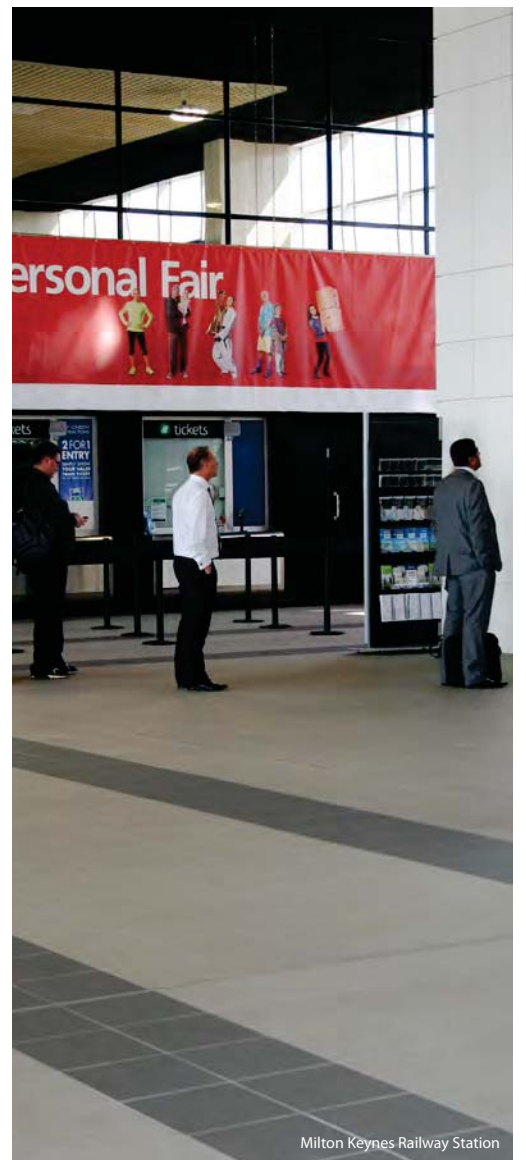
Slough Railway Station



Wokingham Railway Station



Harlow Railway Station



Milton Keynes Railway Station



Pictured above: Gritstone Aggregate Dark Grey 300 x 300 x 9mm DW-GADGR3030 - Clapham Junction Railway Station, June 2011



DORSET WOOLLISCROFT

The Safest Choice in Floor Tiles

Dorset Woolliscroft , Falcon Road, Sowton Industrial Estate, Exeter, Devon, England EX2 7LF
Trade Sales Tel: +44 (0)1392 473030 Email: sales@dorsetwoolliscroft.com
UK Retail Sales Tel: +44 (0)1392 473006 Email: info@dorsetwoolliscroft.com
Export Sales Tel: +44 (0)1392 473001 Email: info@dorsetwoolliscroft.com

Fax: +44 (0)1392 473003

www.dorsetwoolliscroft.com

DWBROCH2 01/16

The Dorset Woolliscroft logo is a registered trade mark of Original Style Ltd.
Registered in England number 3018117. Registered Office: Falcon Road, Sowton Industrial Estate, Exeter EX2 7LF
Part of the Original Style Group
© Copyright Original Style 2015