

Certikin
brings water to life

Vaporex & Monitair



Dehumidification solutions for today and tomorrow

Certikin's enviable reputation for high quality and technical innovation is reflected in our range of energy efficient swimming pool dehumidifiers.



Protect your pool building

Even when you cannot see it, moisture in the form of water vapour is all around us in the air. The humidity in the air, if not controlled, will cause corrosion, mould and bacteria growth. When left unchecked, moisture damage in swimming pool buildings has caused major structural damage within a matter of months.

A false economy

Calorex dehumidifiers are exceptionally efficient, recovering all the energy that is contained in the moisture, without the need for costly ventilation. Using a Calorex minimises the need to introduce and heat cold outdoor air into the pool hall.

For interstitial condensation

Almost all solid materials allow moisture vapour to pass through. Brick, plaster, concrete, wood - all present no obstacle at all to the moisture held in swimming pool air. When warm, moist air cools on its way through the structure, interstitial condensation can occur hidden deep inside the building fabric. Within weeks insulation can become sodden, causing collapse of roofs and

ceilings. Out of sight, mould and bacteria growth are rapid and, if left unchecked, timbers will rot and structural steel will corrode. By the time you notice, its too late - the damage has been done!

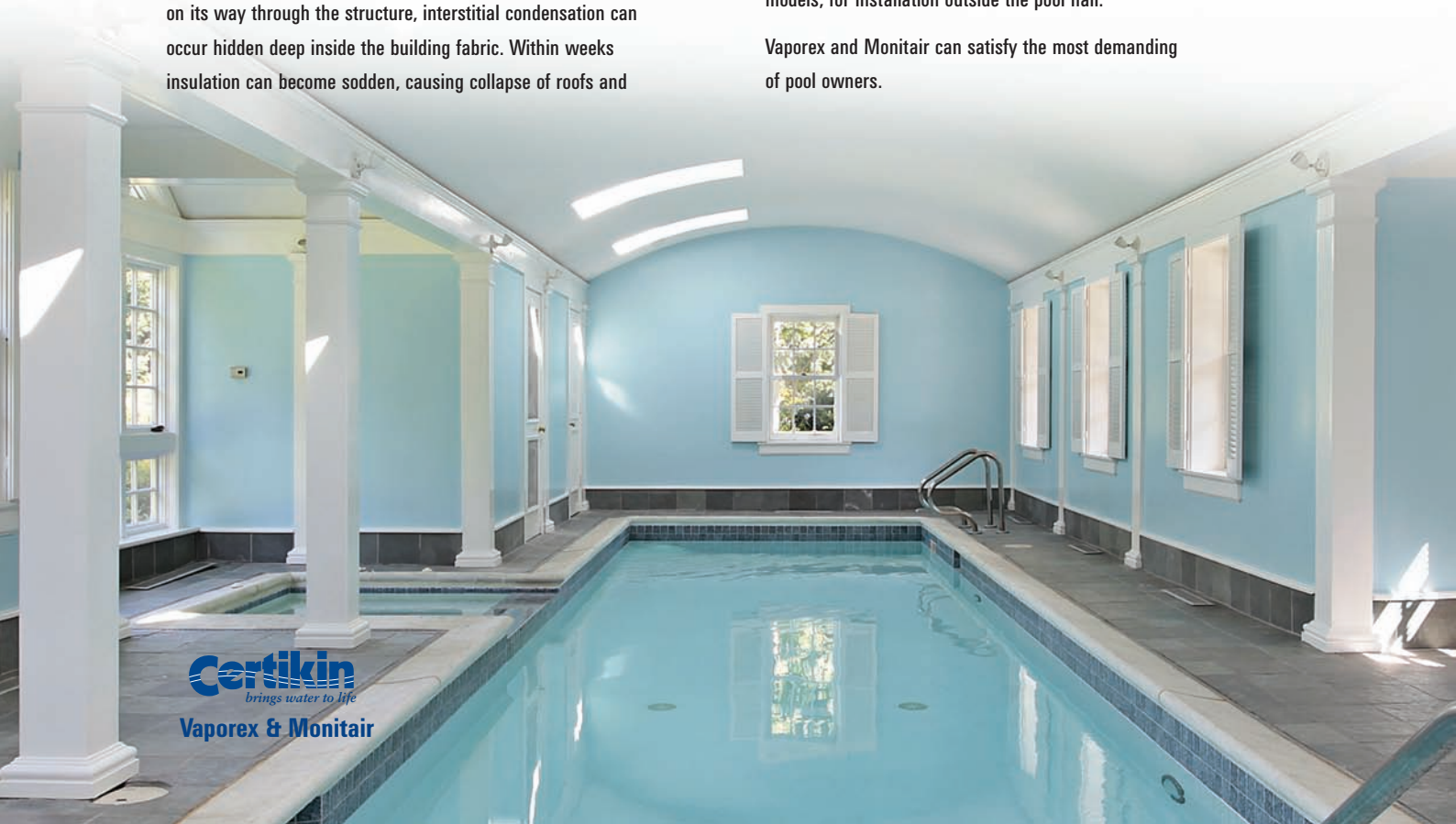
A better way

Calorex dehumidifiers cleverly convert the energy locked up in the moisture into heat used to heat the room. The free heat recovered by dehumidification is not only "green", but it accelerates the drying process, keeps your boiler off for longer, reduces the evaporation from the pool and creates a warm dry environment for you to relax in.

Problem solved

Our wide range of dehumidifiers ensures there is a suitable system for your pool, from a simple wall hung dehumidifiers to larger floor standing environmental control systems. Both the Monitair and Vaporex ranges can be supplied as "through the wall" (TTW) models, for installation outside the pool hall.

Vaporex and Monitair can satisfy the most demanding of pool owners.



VAPOREX



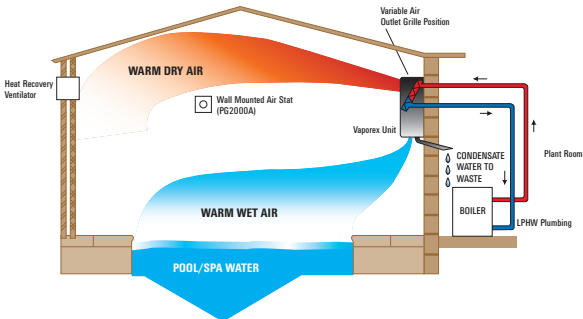
- Efficient and economical
- High performance, low cost
- Automatic controls
- Rapid installation
- Low temperature operation

Technical Specification - Vaporex

		30AP	30AXP	DH33A/L	DH33AX/L	DH33AX/TL	50AP	50AXP	DH55A/L	DH55AX	DH55AX/TL
DESCRIPTION											
Dehumidification	l/h	1.25	1.25	1.25	1.25	1.25	2.5	2.5	2.5	2.5	2.5
Dehumidification	l/h	30.0	30.0	30.0	30.0	30.0	60.0	60.0	60.0	60.0	60.0
RUNNING DATA											
Electric Heat Output	kW	2.0	2.0	-	-	-	4.0	4.0	-	-	-
LPHW Heat Output	kW	-	-	3.0	3.0	3.0	-	-	5.0	-	5.0
LPHW Flow Rate	l/min	-	-	5.0	5.0	5.0	-	-	5.0	-	5.0
LPHW Pressure Drop	m hd	-	-	1.1	1.1	1.1	-	-	1.8	-	1.8
Pipe Connections LPHW	mm	-	-	15	15	15	-	-	15	-	15
Condensate Drain	mm	15	15	15	15	15	15	15	15	-	15
Electrical Supply	Volts/Hz	240/50	240/50	240/50	240/50	240/50	240/50	240/50	240/50	240/50	240/50
Fuse	Amp	20.0	20.0	10.0	10.0	10.0	32.0	32.0	13.0	13.0	13.0
Nominal Running	Amp	12.1	12.1	3.4	3.4	3.4	23.0	23.0	5.6	5.6	5.6
Power Consumed	kW	2.8	2.8	0.75	0.75	0.75	5.3	5.3	1.2	1.2	1.2
Compressor LRA	Amp	15.8	15.8	15.8	15.8	15.8	30.0	30.0	30.0	30.0	30.0
Noise Level @ 3m	dB(A)	52	52	48	48	46	54	54	48	48	47
DIMENSIONS											
Width (unpacked)	mm	780	780	780	780	875	1245	1245	1245	1245	1300
Depth (unpacked)	mm	250	250	250	250	290	250	250	250	250	290
Height (unpacked)	mm	655	655	653	653	745	655	655	653	653	745
Weight (unpacked)	kg	40	40	40	40	48	60	60	60	60	70

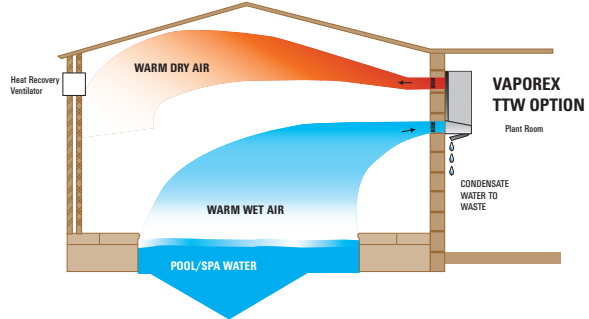
- LPHW = Low pressure hot water
- Humidistat adjustable from 20% to 80% RH.
- Minimum air temperature on standard models is 15°C, the defrost models will operate down to 0°C.
- Fuses should be motor rated.
- TTW models are supplied with inlet and outlet grilles. (C/W sleeves)

- These performance figures are based on air at 30°C and 60% RH and pool water at 28°C with boiler water at 80°C.
- Vaporex units are covered by a full two year parts and labour warranty.
- All Vaporex units are R407C ozone friendly refrigerant
- Manufactured in the UK.



Air Heater Facility

Models 33 and 55 can be supplied with LPHW heater batteries which will provide pool room air heating, thus eliminating the need for separate fan heaters and / or radiators. 3kW heating is available on the 33 model, 5kW on the 55 model. Models with electric heating elements are also available. Model 30 provides 2kW heat and Model 50 provides 4kW of heat. An air thermostat is necessary for all models with air heating facility; One thermostat is included with each new Vaporex with heating facility.



Through The Wall (TTW)

Where there is a preference to place the dehumidifier in an adjacent plant room, the Vaporex are also available in a TTW variant. Supplied with full wall brackets and decorative grilles for the air ducts, the TTW is a useful option for confined space or particular aesthetic demands. Also available with air heating facility as above.

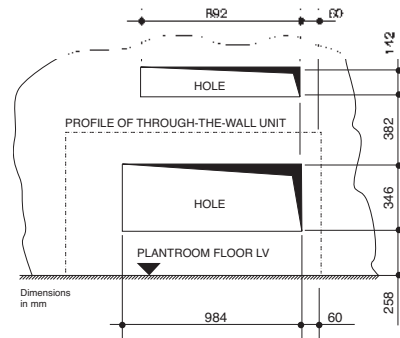
MONITAIR

- Defrost - standard on all models
- Air heating option available
- Optional through-the-wall model
- Variable humidistat
- Simple floor standing installation
- Economical and efficient



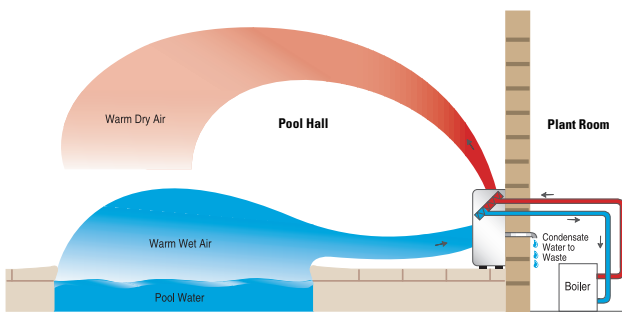
Technical Specification- Monitair

		DH44	DH66	DH75	DH110
RUNNING DATA					
Dehumidification capacity	(L/hr)	1.3	2.5	3.6	4.5
Heat to air (with LPHW)	kW	3.3	5.8	8.9	8.9
Air flow rate	m ³ /hr	440	740	1180	1180
Power consumption	kW	0.51	0.58	1.46	2.12
Running current 1ph	Amp	2.6	4.2	6.4	9.3
Fuse capacity 1ph	Amp	10	13	13	20
Running current 3ph	Amp	-	-	-	4.2
Fuse capacity 3ph	Amp	-	-	-	10
Weight - unpacked	Kg	57	74	153	153
DIMENSIONS OF POOL HALL MODELS					
Width	mm	880	1345	1520	1520
Height	mm	1026	1026	796	796
Depth	mm	294	294	385	385
DIMENSIONS OF THROUGH-THE-WALL MODELS					
Width	mm	-	-	1474	1474
Height (to top duct)	mm	-	-	1167	1167
Depth	mm	-	-	350	350



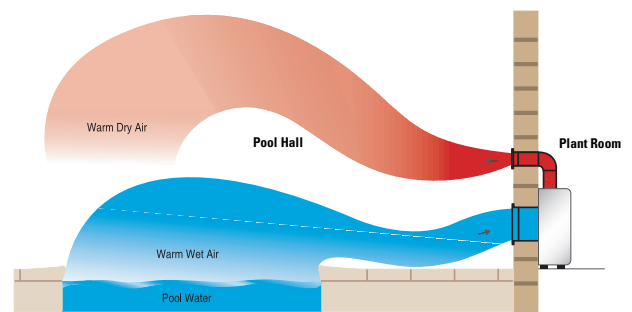
Through-the-wall hole positions (75 /100 units)
(viewed from within the plant room)

- Through-the-wall models include duct and grille kit
- Standard models are finished in smooth white coated alloy
- Air heating capacities assume 80°C LPHW supply
- A motorised 3 way valve is built- in to units fitted with air heating facility
- Dehumidification capacities listed assume pool water @ 28°C, pool hall air @ 30°C, RH @ 60%



Standard Model (with optional air heating battery)

Note: Units with air heating option are supplied with a separate air thermostat.



Through-the-wall model (75 / 110 units)

If you require further technical information
please do not hesitate to contact us

Certikin
brings water to life



Certikin International Ltd
www.certikin.co.uk

